



**OPEN THE DOOR**



**TO YOUR AMBIENT AND  
REFRIGERATED STORAGE**

**WWW.SPACEWISE.CO.UK**

**0800 132 981**

**SALES@SPACEWISE.CO.UK**



# About Us

**EXCELLENCE SINCE 1989**

Spacewise offers the widest range of container types and specifications available for static storage in the UK.

The Spacewise comprehensive range of ambient & temperature controlled containers is supplied on rental terms which are tailored to meet our customers' specific requirements.

Our leadership in the storage container leasing market in the UK was confirmed when Spacewise was selected by the British Olympic Association as the licensed supplier of refrigerated and ambient containers to the London 2012 Games Olympic venues.

**Spacewise is committed to continuing development and investment in its fleet and service.**



SPACEWISE is the proud holder of the below license issued by British Olympic Authority  
"Supplier of refrigerated and ambient containers to the London 2012 Games Olympic venues"



*"Coca-Cola Enterprises has developed a strong relationship with Spacewise during the London 2012 Olympic & Paralympics Games. The Spacewise team has worked effectively with CCE providing support to deliver on time solutions for this high profile logistical operation, contributing to a successful Games time operation for our business."*

*Coca-Cola*





### OPTIONAL FEATURES

- ✓ Remote monitoring system which can be used via a mobile phone, tablet or PC from almost anywhere in the world.
- ✓ Security Grill
- ✓ Plastic Strip Curtains

# Refrigerated

## CONTAINERS FOR RENT & SALE

Short term, long term or as an emergency contingency, Spacewise provides the ultimate temperature controlled one stop solution. We offer free advice and surveys and planning, through to the supply and delivery of our equipment. Thereafter you will have total peace of mind knowing that you have our experience of over 50 years at your fingertips. All our equipment is covered by our 24/7 emergency breakdown service, available 365 days a year.

We supply major supermarkets through to small family owned butchers. All Spacewise customers receive the highest standard of service and commitment regardless of their size. Most importantly our customers can rest assured that their product and business is being supported by the UK leader in temperature controlled storage.

### STANDARD FEATURES

- ✓ Temperature range from -35°C to +35°C
- ✓ Low noise and low energy consumption
- ✓ Easy Open Butchers door (fully lockable)
- ✓ Flat flooring for easy manoeuvre of trolleys etc.
- ✓ Aluminium loading ramp
- ✓ Man trap panic alarm
- ✓ Nationwide delivery
- ✓ Internal lighting including emergency internal lighting in the event of a power failure



### SPACEWISE CAN DO IT ALL..



#### Delivery

We can deliver units anywhere within the UK.



#### Site Survey

Free no obligation site survey carried out by our in-house team.



#### Products

Spacewise offers the widest range of container types and specifications available for static storage in the UK.



#### Refrigerated Containers

Low noise and low energy consumption (in comparison to our competitors).

# Unit Sizes

FOR REFRIGERATED CONTAINERS



## 10FT EXTERNAL

**Length** 2.9m (10ft)

**Width** 2.4m (8ft)

**Height** 2.6m (8ft 6ins)



## 20FT EXTERNAL

**Length** 6.0m (20ft)

**Width** 2.4m (8ft)

**Height** 2.6m (8ft 6ins)



## 40FT EXTERNAL

**Length** 12.00m (40ft)

**Width** 2.4m (8ft)

**Height** 2.6m (8ft 6ins)

## 10FT INTERNAL

**Length** 2.3m (7ft 6ins)

**Width** 2.3m (7ft 6ins)

**Height** 2.3m (7ft 6ins)

## 20FT INTERNAL

**Length** 5.0m (16ft 4ins)

**Width** 2.3m (7ft 6ins)

**Height** 2.3m (7ft 6ins)

## 40FT INTERNAL

**Length** 11.1m (36ft 4ins)

**Width** 2.3m (7ft 6ins)

**Height** 2.3m (7ft 6ins)



Low noise and low energy consumption



Temperature range from -35°C to +35°C



Easy Open Butchers door (fully lockable)



Flat flooring for easy manoeuvre of trolleys







## SPACEWISE CAN DO IT ALL..



### Delivery

We can deliver units anywhere within the UK.



### Products

Spacewise offers the widest range of container types and specifications available for static storage in the UK.



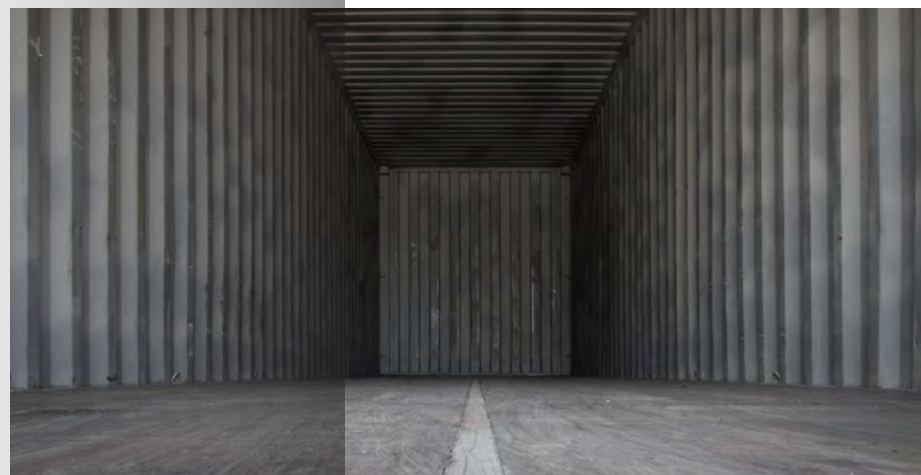
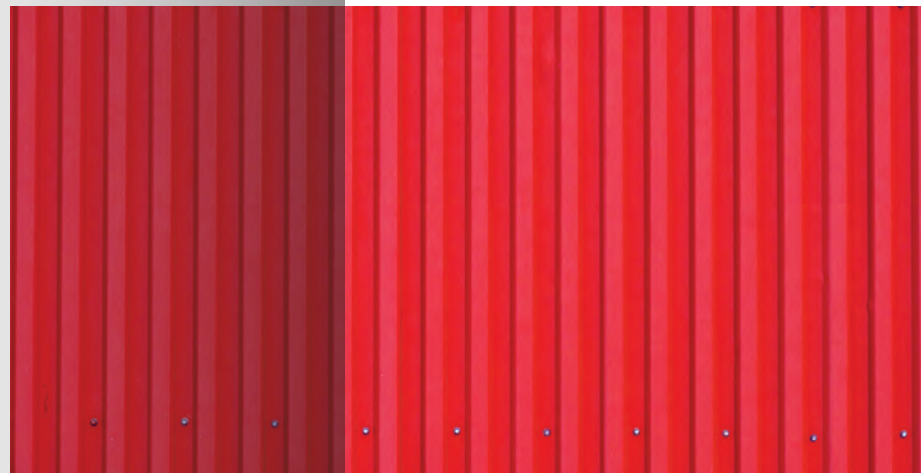
### Site Survey

Free no obligation site survey carried out by our in-house team.



### Hire Terms

Flexible hire terms from 1 day hire through to permanent



# Ambient

## CONTAINERS FOR RENT & SALE

From the supply of a single unit through to the entire build of a self storage yard, SPACEWISE can fulfill your requirement. Our equipment is built to the specification demanded by the international shipping industry so that the strength and finish of each unit reaches the highest standard. SPACEWISE is owned by TAL International Container Corporation - one of the largest container organisations in the world. With their support the availability, location, service and price of our equipment is hard to equal.

### STANDARD FEATURES

- ✓ Vandal resistant
- ✓ Flat plywood flooring
- ✓ Nationwide delivery
- ✓ 5 x vents each side (total 10!) to ensure good adequate ventilation
- ✓ Double locking bars and padlock lock box for additional security
- ✓ Built to international shipping standards so very robust, strong and secure





Built to be very robust,  
strong and secure



5 x vents each side to  
ensure good ventilation



Double locking bars  
and padlock lock-box



Flat flooring for easy  
manoeuvre of trolleys

# Unit Sizes

FOR AMBIENT CONTAINERS



## 10FT EXTERNAL

**Length** 2.9m (10ft)

**Width** 2.4m (8ft)

**Height** 2.6m (8ft 6ins)



## 20FT EXTERNAL

**Length** 6.0m (20ft)

**Width** 2.4m (8ft)

**Height** 2.6m (8ft 6ins)



## 40FT EXTERNAL

**Length** 12.00m (40ft)

**Width** 2.4m (8ft)

**Height** 2.5m (8ft 6ins)

## 10FT INTERNAL

**Length** 2.3m (7ft 6ins)

**Width** 2.3m (7ft 6ins)

**Height** 2.3m (7ft 6ins)

## 20FT INTERNAL

**Length** 5.8m (19ft 4ins)

**Width** 2.3m (7ft 9ins)

**Height** 2.3m (7ft 10ins)

## 40FT INTERNAL

**Length** 11.9m (39ft 6ins)

**Width** 2.3m (7ft 9ins)

**Height** 2.3m (7ft 10ins)

## **GET IN TOUCH!**

### **Our address**

CEME, Marsh Way,  
Rainham, Essex,  
RM13 8EU

**0800 132 981**

**[sales@spacewise.co.uk](mailto:sales@spacewise.co.uk)**

**[www.spacewise.co.uk](http://www.spacewise.co.uk)**

